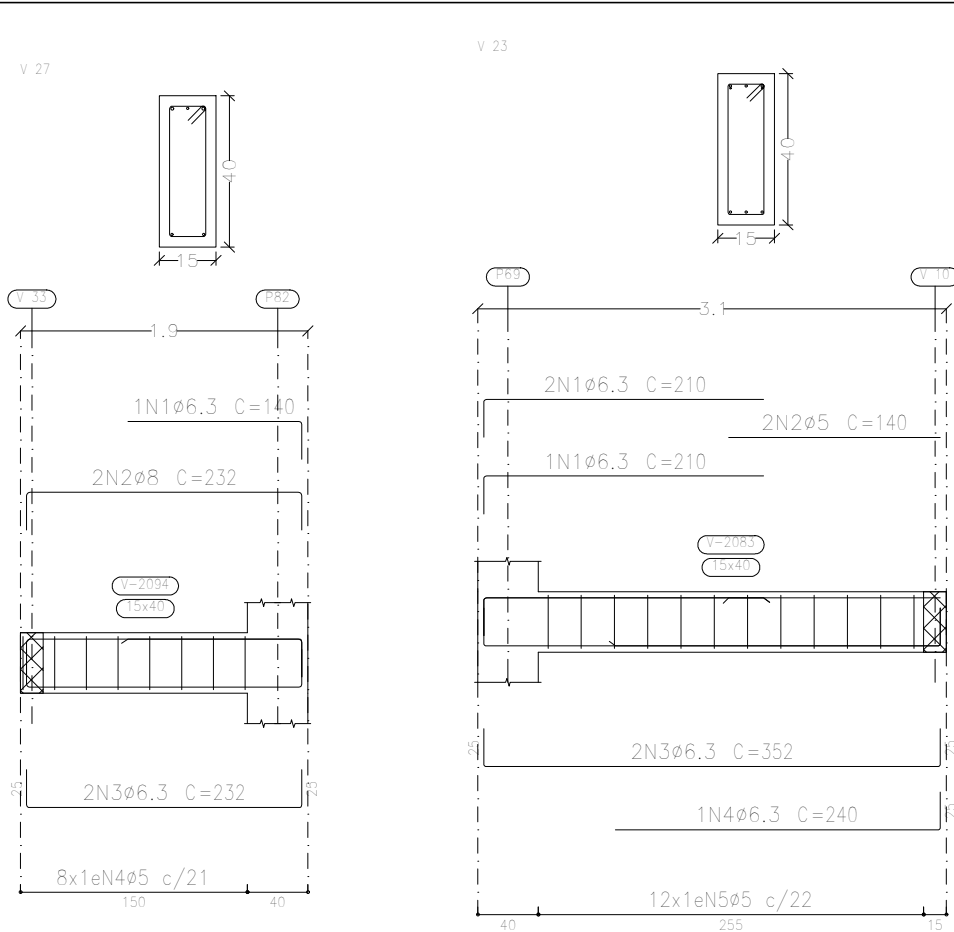
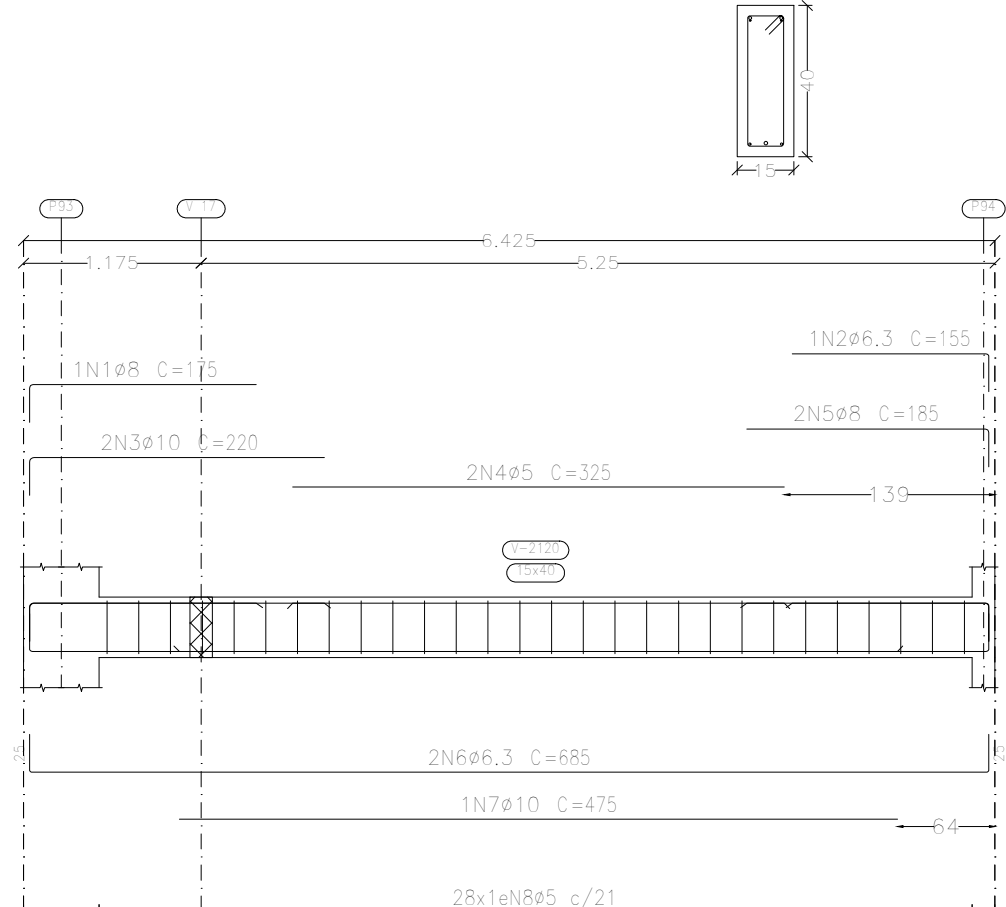
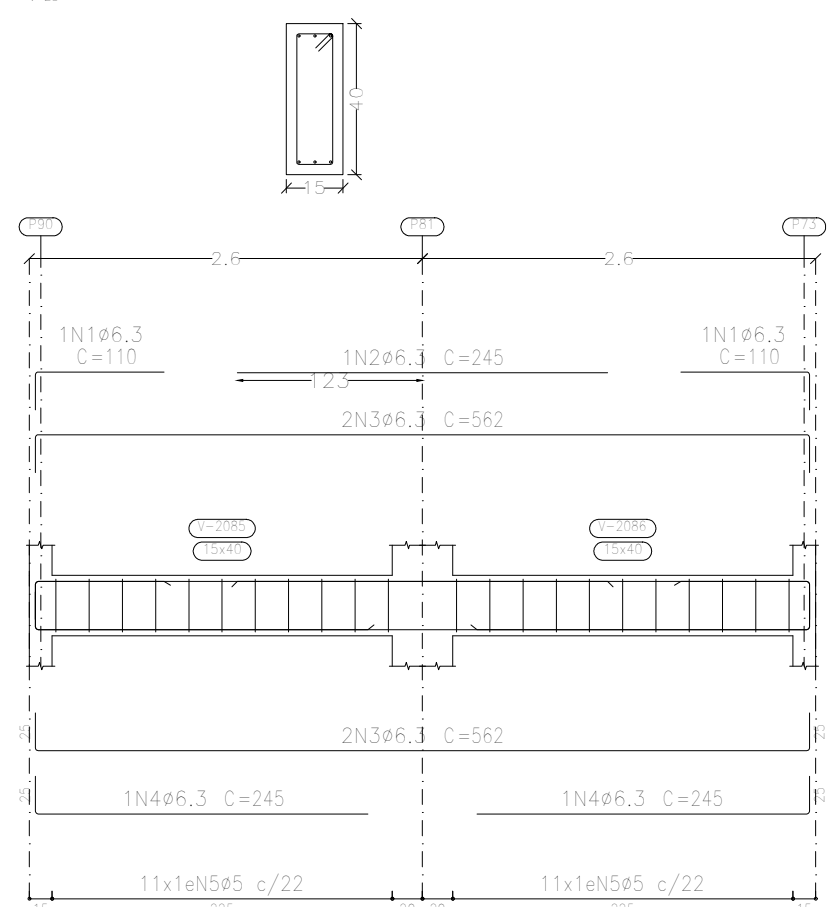
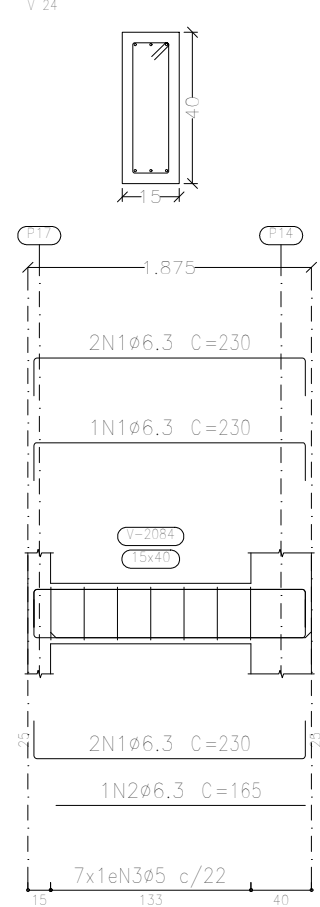
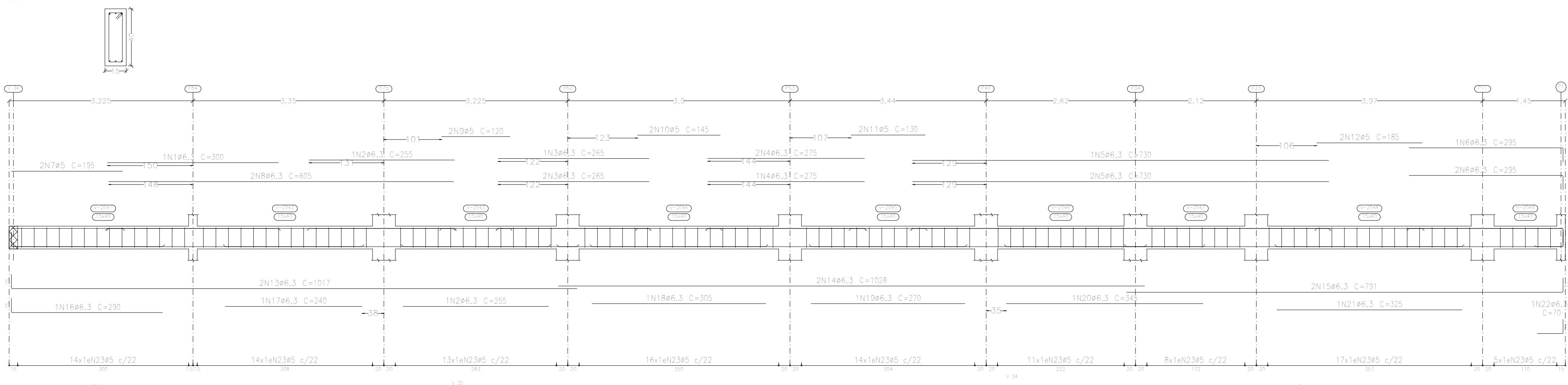
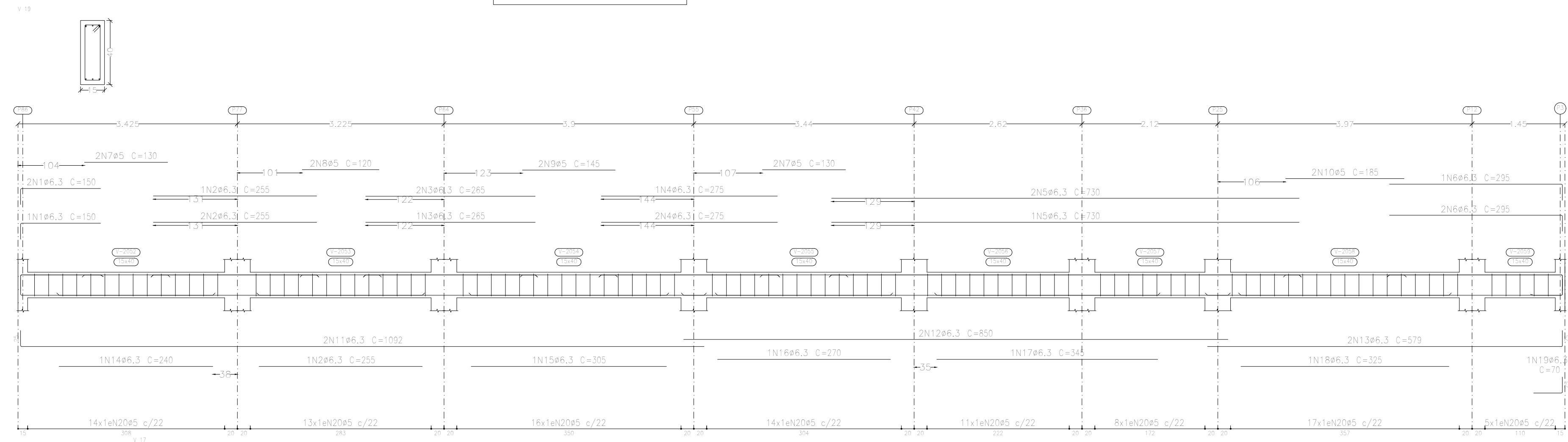
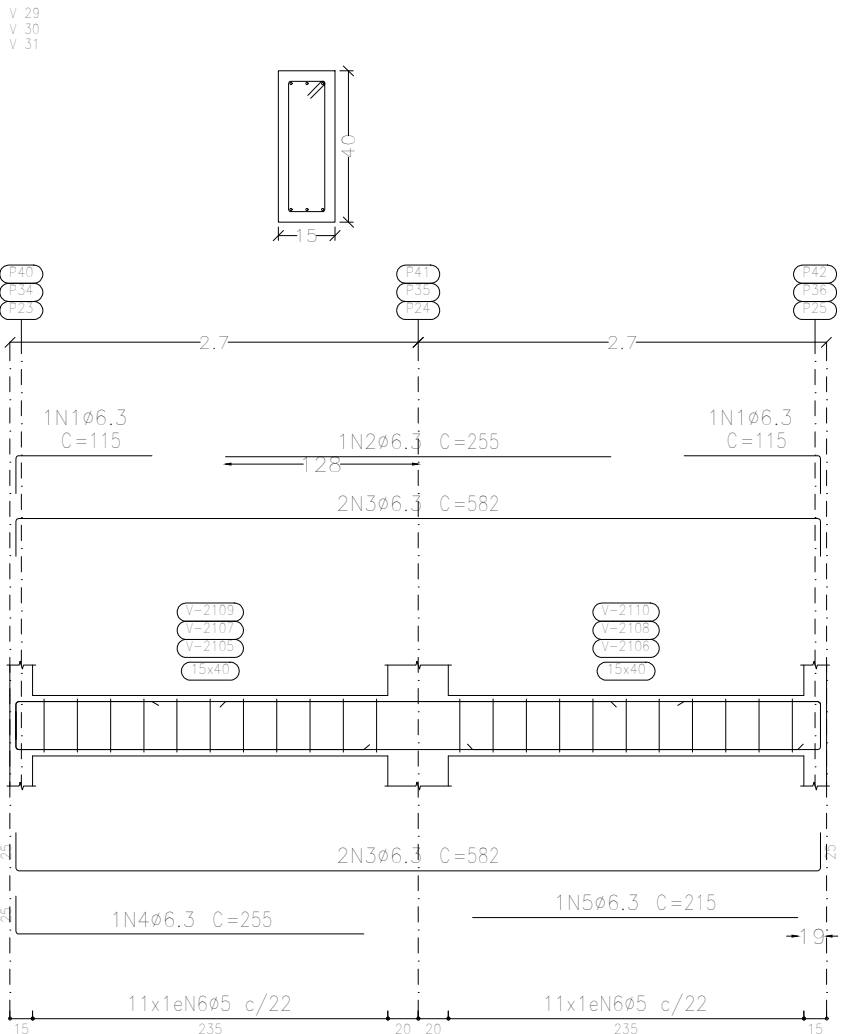


Piso 2
Desenho de vigas
Concreto: C25, em geral
Aço das barras: CA-50 e CA-60
Aço dos estribos: CA-50 e CA-60
Escala vigas 1:50
Escala seções 1:20
Escala aberturas 1:20



Resumo Aço	Comp. total	Peso+10%	Total
CA-50	1867.7	509	
CA-60	1706.4	295	
Total			842

Elemento	Pos.	Diam.	Q.	Esquema (cm)	Comp. (cm)	Total (cm)	CA-50 (kg)	CA-60 (kg)
V 23=V 30=V 31	1	ø6.3	2		115	230	0.6	
	2	ø6.3	1		255	255	0.6	
	3	ø6.3	4		582	2328	5.7	
	4	ø6.3	1		255	255	0.6	
	5	ø6.3	1		215	215	0.5	
	6	ø5	22		98	2156		3.4
					Total+10%	8.8	3.7	
					(x3)	26.4	11.1	
V 34	1	ø8	1		175	175	0.7	
	2	ø6.3	1		155	155	0.4	
	3	ø10	2		220	440	2.7	
	4	ø5	2		325	650		1.0
	5	ø8	2		185	370	1.5	
	6	ø6.3	2		685	1370	3.4	
	7	ø10	1		475	475	2.9	
	8	ø5	28		98	2744		4.3
					Total+10%	12.8	5.8	



Elemento	Pos.	Diam.	Q.	Esquema (cm)	Comp. (cm)	Total (cm)	CA-50 (kg)	CA-60 (kg)
V 20	1	ø6.3	3		175	525	1.3	
	2	ø6.3	3		270	810	2.0	
	3	ø6.3	3		280	840	2.1	
	4	ø6.3	3		535	1605	3.9	
	5	ø6.3	3		125	375	0.9	
	6	ø5	2		130	260		0.4
	7	ø5	2		135	270		0.4
	8	ø5	2		145	290		0.5
	9	ø5	2		175	350		0.5
	10	ø6.3	2		772	1544	3.8	
	11	ø6.3	2		1047	2094	5.1	
	12	ø6.3	1		275	275	0.7	
	13	ø6.3	1		285	285	0.7	
	14	ø6.3	1		305	305	0.7	
	15	ø6.3	1		165	165	0.4	
	16	ø6.3	1		315	315	0.8	
					Total+10%	24.6	14.2	

V 19	1	ø6.3	3		150	450	1.1	
	2	ø6.3	4		255	1020	2.5	
	3	ø6.3	3		265	795	1.9	
	4	ø6.3	3		275	825	2.0	
	5	ø6.3	3		730	2190	5.4	
	6	ø6.3	3		295	885	2.2	
	7	ø5	4		130	520		0.8
	8	ø5	2		120	240		0.4
	9	ø5	2		145	290		0.5
	10	ø5	2		185	370		0.6
	11	ø6.3	2		1092	2184	5.3	
	12	ø6.3	2		850	1700	4.2	
	13	ø6.3	2		579	1158	2.8	
	14	ø6.3	1		240	240	0.6	
	15	ø6.3	1		305	305	0.7	
	16	ø6.3	1		270	270	0.7	
	17	ø6.3	1		345	345	0.8	
	18	ø6.3	1		325	325	0.8	
	19	ø6.3	1		70	70	0.2	
	20	ø5	98		98	9604		15.1
					Total+10%	34.3	19.1	

V 17	1	ø6.3	1		300	300	0.7	
	2	ø6.3	2		255	510	1.2	
	3	ø6.3	3		265	795	1.9	
	4	ø6.3	3		275	825	2.0	
	5	ø6.3	3		730	2190	5.4	
	6	ø6.3	3		295	885	2.2	
	7	ø5	2		195	390		0.6
	8	ø6.3	2		605	1210	3.0	
	9	ø5	2		120	240		0.4
	10	ø5	2		145	290		0.5
	11	ø5	2		130	260		0.4
	12	ø5	2		185	370		0.6
	13	ø6.3	2		1017	2034	5.0	
	14	ø6.3	2		1028	2056	5.0	
	15	ø6.3	2		791	1582	3.9	
	16	ø6.3	1		290	290	0.7	
	17	ø6.3	1		240	240	0.6	
	18	ø6.3	1		305	305	0.7	
	19	ø6.3	1		270	270	0.7	
	20	ø6.3	1		345	345	0.8	
	21	ø6.3	1		325	325	0.8	
	22	ø6.3	1		70	70	0.2	
	23	ø5	112		98	10976		17.2
					Total+10%	38.3	21.7	

V 27	1	ø6.3	1		140	140	0.3	
	2	ø8	2		232	464	1.8	
	3	ø6.3	2		232	464	1.1	
	4	ø5	8		98	784		1.2
					Total+10%	3.5	1.3	

V 23	1	ø6.3	3		210	630	1.5	
	2	ø5	2		140	280		0.4
	3	ø6.3	2		352	704	1.7	
	4	ø6.3	1		240	240	0.6	
	5	ø5	12		98	1176		1.8
					Total+10%	4.2	2.4	

V 24	1	ø6.3	5		230	1150	2.8	
	2	ø6.3	1		165	165	0.4	
	3	ø5	7		98	686		1.1
					Total+10%	3.5	1.2	

V 25	1	ø6.3	2		110	220	0.5	
	2	ø6.3	1		245	245	0.6	
	3	ø6.3	4		562	2248	5.5	
	4	ø6.3	2		245	490	1.2	
	5	ø5	22		98	2156		3.4
					Total+10%	8.6	3.7	

					ø5	0.0	80.5	
					ø6.3	145.6	0.0	
					ø8	4.4	0.0	
					ø10	6.2	0.0	
					Total	156.2	80.5	

Complexo Municipal de Saúde		Data:	25/10/2023
Local:		Número de desenho:	
Avenida Júlio Campos, Quadra 03			
Complexo Municipal de Saúde		Escala:	Indicada
Eduardo Rampanelli Tosetto Engenheiro Civil		Data:	25/10/2023
Número do CREA:		1220503037	